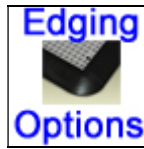
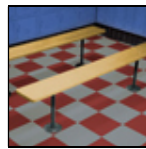
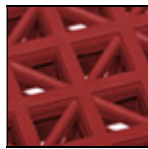


## DeckSafe Drainage Tiles



DeckSafe Drainage Tiles snap together easily and are ideal for custom configurations. Decksafe floor tiles help to keep your walkways safe and dry which can prevent slip & fall accidents. These drainage mats are comfortable to walk on, dry quickly all while providing a slip-resistant surface.

- 12" x 12" interlocking drain tiles: 1/2" thick
- Helps keeps your walking surface safe and dry
- Comfortable to walk on barefoot
- Easily snap together custom configurations right on site
- 12" x 1.75" reducers (beveled edges) are available
- Used for locker room matting, pool matting, sauna matting or in any wet area where traction is a priority.

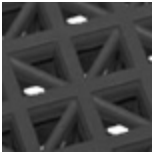
**NOTE: Outdoor tiles are treated with a UV-resistant compound making them fade-resistant and greatly reducing any expansion/contraction due to temperature changes.**

### Standard Sizes

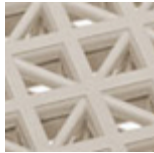
Size	Qty. 1-200	Qty. 201-500	Qty. 501-1000	Qty. 1001-2500
INDOOR Tile	\$3.49	\$3.40	\$3.35	\$3.30
OUTDOOR Tile	\$3.49	\$3.40	\$3.35	\$3.30
Male Edge	\$2.94	\$2.92	\$2.88	\$2.84
Male Corner Edge	\$2.94	\$2.92	\$2.88	\$2.84
Female Edge	\$2.94	\$2.92	\$2.88	\$2.84
Female Corner Edge	\$2.94	\$2.92	\$2.88	\$2.84

**Please Call for  
Larger Quantities**

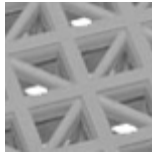
### Available Colors



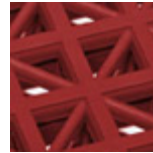
Black



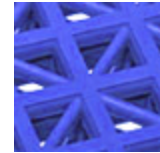
Beige



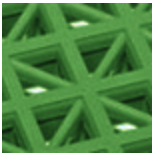
Grey



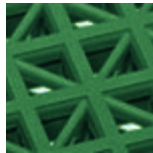
Brick Red



Blue



Moss Green



Evergreen